


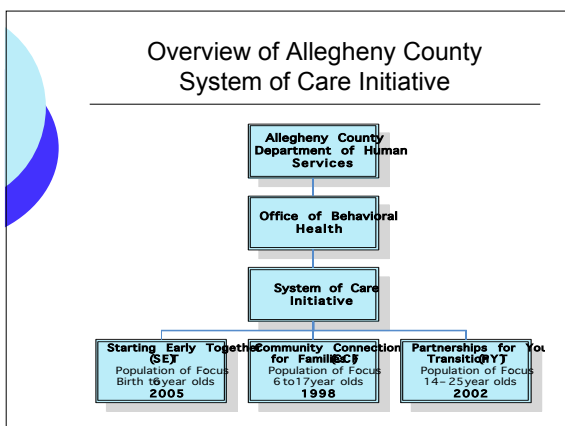
### Creating a System of Care Tailored to Meet the Needs of the Early Childhood Population



Presenters: Robin Orlando, Director of Quality Assurance & Liz Masten, Early Childhood Evaluation Coordinator

### Presentation Objectives

- Provide overview of SOC in Allegheny County
- Highlight critical components of strategic planning process for Early Childhood grant
- Emphasize importance of evaluation in strategic planning process
- Discuss strategies for replication



### Early Childhood Grant Strategic Planning Process

*Introduction*

**Goal**


- To engage a diverse group of stakeholders, including family members of children with mental health needs and system partners, in a collaborative planning process to complete the following tasks:
  - Assess the current state of children's mental health within Allegheny County
  - Determine guiding vision for EC grant
  - Within provided context, inform SOC structure and outcomes via the creation of a strategic plan




### Strategic Planning Process

Planning Operations  
Overview

- Invitations
  - Clearly defined purpose
- 6 evening meetings
  - One hour family pre-meetings
  - 1.5 hour meetings
  - Central location
- Incentives for families
  - On-site childcare, food, and stipends
- Independently contracted facilitator was a family member
- Meeting Agendas
- Grouping Strategies
- Process Evaluation
  - Surveys given after 1st, 3rd, and 6<sup>th</sup> meeting



### Strategic Planning Process

Outcomes

- Increased Buy-In
  - System partners and family members
  - Final survey results
- Creation of Guiding Vision
  - All stakeholders contributed to common vision
- Creation of Strategic Plan
  - Informed Logic Model and local outcomes

### Strategic Planning Process


Local Outcomes

- ✓ Caregiver Depression
  - Center for Epidemiological Studies Depression Scale
- ✓ Exposure to Trauma
  - Traumatic Events Screening Inventory
- ✓ Family Empowerment
  - Family Empowerment Scale
- ✓ Social/Emotional (children 1 -5)
  - BITSEA and DECA
- ✓ Parental Stress
  - Parenting Stress Index

### Strategic Planning Process

Strengths

- Pre-existing belief in System of Care's values and principles
- Clearly defined purpose of formal meetings
- Family involvement
- Great facilitator
- Recommendations were accurately captured
- Process evaluation



### Strategic Planning Process

And the Survey Said...

**Participants Felt Respected, Fully Engaged, and Optimistic**  
All values are based on a scale of 1 (strong disagree) to 5 (strongly agree). The following chart displays key aggregate data from the three surveys.

Statement	Score
I am able to participate	4.68
I understand my role	4.62
I understand the goal	4.55
Facilitator respects differing viewpoints	4.82

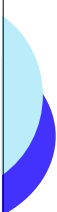
N=110

### Strategic Planning Process

Areas for Improvement

- Detailed review of grant summary
- Audacious goals given time constraints
- Creating opportunities for long term meaningful engagement
- Developing meaningful family/professional relationships
- Defining purposeful youth involvement
- Creating more feedback opportunities






### **Strategic Planning Process**

*Ideas for Replication*

---

- Hold family pre-meetings
- Provide incentives for families
- Conduct process evaluation
  - Invaluable data to course-correct if needed
- Use an independent facilitator
- Create subcommittees to sustain long term engagement



### **Contact Information**

---

Robin Orlando  
Director of Quality Assurance  
[rorlando@dhs.county.allegheeny.pa.us](mailto:rorlando@dhs.county.allegheeny.pa.us)

Elizabeth Masten  
Early Childhood Evaluation Coordinator  
[emasten@dhs.county.allegheeny.pa.us](mailto:emasten@dhs.county.allegheeny.pa.us)

Terri Reighard  
SET Project Director  
[treighard@dhs.county.allegheeny.pa.us](mailto:treighard@dhs.county.allegheeny.pa.us)